



Meet Enact

InfinityQS® Enact™ is a cloud-based Quality Intelligence platform that provides unparalleled visibility and unmatched insight into manufacturing quality data. Enact revolutionizes the role of quality, cutting through the clutter of data to deliver tailored, strategic insight and giving manufacturers the power to enact a global transformation of their processes and product quality. By enabling a new way of looking at data, Enact propels businesses toward a level of quality knowledge that produces real results, fast.

Once deployed, Enact gives users the impression that it “just knows” what they need. Through role-based dashboards, Enact surfaces crucial quality information, and notifications specific to each user. As a result, Enact provides enterprise-wide visibility and actionable intelligence that enables manufacturers to transform their businesses, reducing costs, optimizing yields, and outpacing the competition.

Enact a new way of looking at Quality

The Enact process model captures a true representation of any manufacturing process, so system configuration is intuitive and natural. Process models are highly graphical and can be shared so different sites can use standardized processes, helping to enforce best manufacturing practices and minimize overall configuration effort.

The Enact process model connects workers to processes via highly visual, customizable dashboards, so users automatically receive the most recent process performance information, data collection reminders, alarms and event notifications for the processes for which they are responsible. Whatever their role—in Quality, Operations, Engineering, IT, or Management—users are better informed and prepared to take action when required. Users see precisely the information they need, when and where they need it.

All quality and process data in Enact resides in a Unified Data Repository, making data comparisons between assets, lines, and plants simple and straightforward. This is the key to enterprise visibility and is a hallmark of InfinityQS's approach to quality management.

Enact is secure, efficient, and flexible

Enact is a thoroughly modern software as a service (SaaS) platform that speeds implementation; eliminates costly, time-consuming upgrades; enhances security; and minimizes TCO. Enact runs on the Microsoft Azure cloud platform, ensuring it is highly secure and available and dramatically reducing the workload on strained plant IT personnel.

User access can be precisely controlled so the right information flows to the right people in real time, improving user effectiveness and optimizing the ROI of Enact for each manufacturer.

Unlike the manufacturing landscape of a decade ago, today's approach often incorporates technology throughout shop floor processes and beyond.

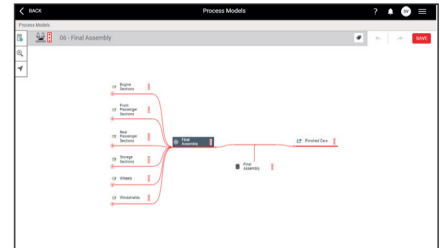
— Steve Wise,
VP Statistical Methods

Key Capabilities

Configuration

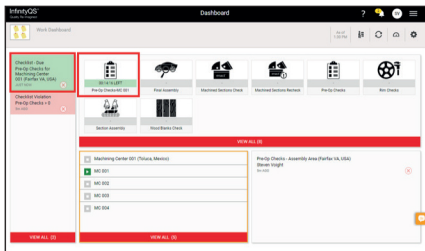
Enact offers an innovative graphical Process Modeling capability for improving the efficiency and flexibility of configuring the system.

- › Parts
- › Processes
 - › Process State
- › Features (tests)
 - › Variable, Attribute
 - › Calculations
- › Process models
- › Part recipes
- › Checklists
- › Conditions
- › Sampling Requirements
- › Control & Specification Limits
- › Lots
- › Notification Rules
- › Parameter Sets
- › Process Hierarchy
- › Shifts
- › Tags



Data Collection

Enact supports a comprehensive range of ways to access and collect quality and process data.

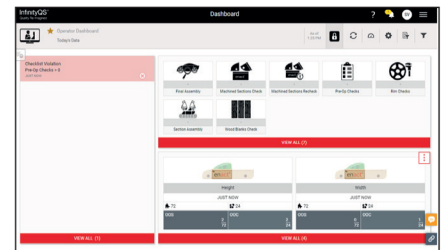


- › Manual (timed, untimed)
 - › Variable, Attribute
 - › Checklists
 - › Comments
- › Semi-Automated (gauges, measurement devices)
- › Fully Automated
 - › OPC, flat file, Serial RS-232, TCP/IP, OLE DB, XML files, AQDEF format files, GE iHistorian, Wonderware Historian, custom

Process Monitoring

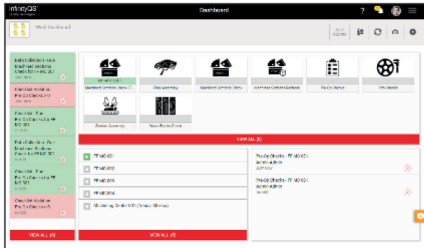
Enact's dashboards help you monitor real-time product quality and process performance. Dashboards also provide you with system notifications, help you collect data, and enable investigation of possible performance shortfalls. You can easily filter data to learn more about a growing quality issue. Parameter sets make it easy for you to provide access to only the quality data needed by specific personnel. This improves user efficiency and system performance.

- › Dashboards
 - › Work, Aggregate, Raw
 - › Dashboard Tiles
 - › Notifications
 - › Data Collections
 - › Process State
 - › Finished Item
 - › Box & Whisker (10 levels)
 - › Pareto: Events or data (10 levels)
 - › Data Summary
 - › Stream Summary: Control charts (Xbar R, Xbar s, IX MR, others)
- › Compliance
 - › Summary Tables
 - › Stream Statistics (speedometer style)
 - › 2D Line Charts
- › Parameter Sets (data set selection, saved or ad hoc)
- › Filters (chart data)



Alert/Notification

Today's workforce is leaner than ever. Enact's automated event notification system detects and then notifies users based on the event and the user's role. Enact uses notification rules to trigger real-time warnings when an event occurs, including:



- › Missed data collections
- › Net content control violations
- › Specification limit violations
- › Other statistical violations.

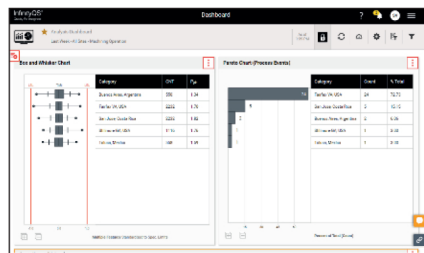
Upon a notification rule violation, Enact can be configured to send a message to all selected users. Notifications can be delivered by the following options.

- › Dashboard Notifications
- › Email
- › Text message

Analysis

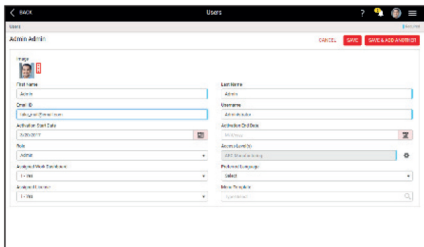
Once a possible process issue has been detected manufacturers need to fully understand it and develop the proper response to minimize disruptions to production. Enact has a powerful set of data analysis tools embedded in our dashboard-centric user interface to make it easy for users to drill-down and really understand what their processes are doing so they can develop the best possible response.

- › Process Hierarchy
 - › Nine levels
- › Control Charts
 - › \bar{X} -s, IX-Ms, and more
- › Pareto Plots
 - › Event or Subgroup Data
 - › 10 levels
- › Mobile Devices
 - › Supports full analysis capabilities



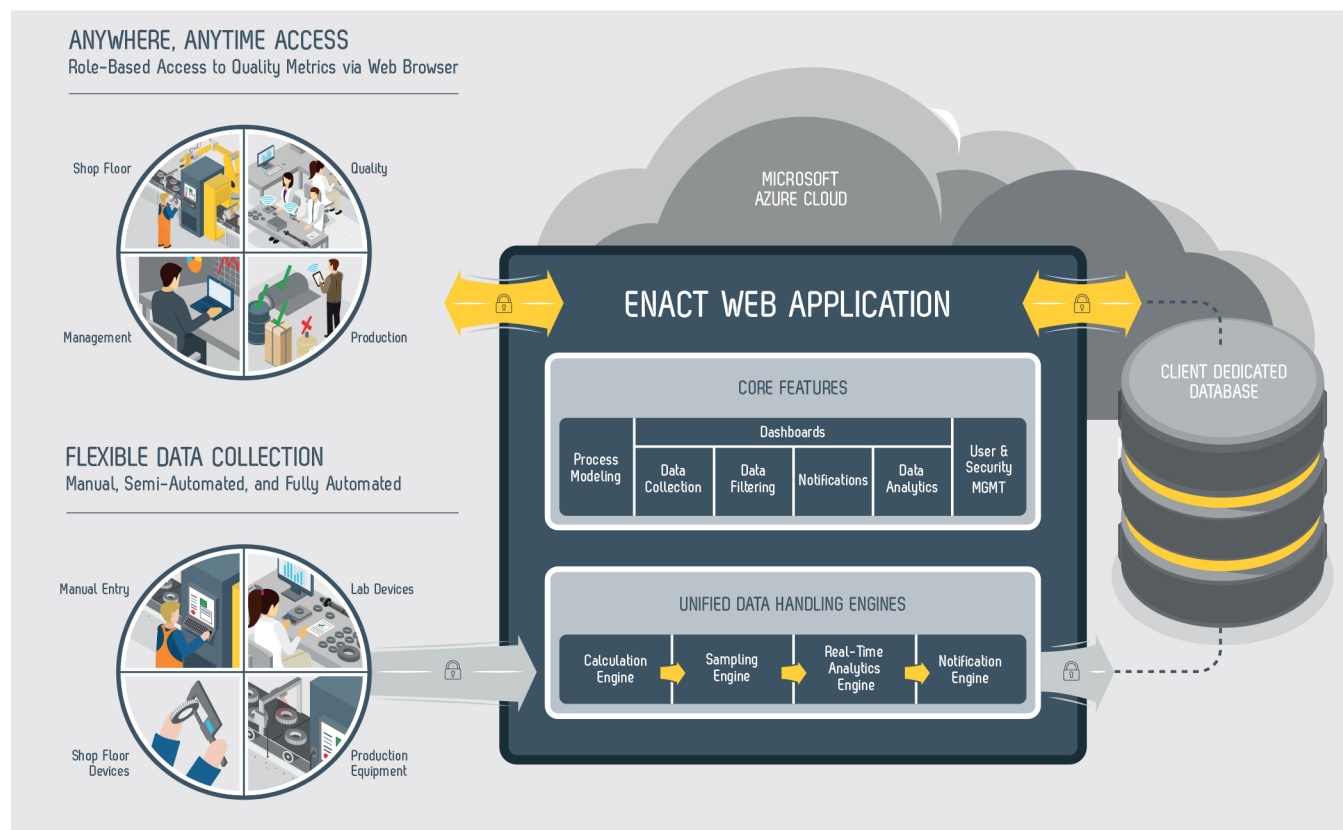
System Administration

Enact has been designed so system administrators can tune the Enact experience, the available tools, and presented information to the needs and responsibilities of each user. Our web-based approach means that changes can be made by the system administrator from any web connected device.



- › User/role creation & maintenance
 - › Users: Create, Assign Role, Data Access Level
 - › Roles: System Administrator, Custom Roles
- › Configurable Security Policies
 - › User Login Settings
 - › Credential Settings
 - › Data Authentication Settings
- › Screen Appearance Options
- › Manage User and Workstation Licenses

Enact simplifies the acquisition, deployment, operation, and maintenance of real-time quality management via a modern, native-cloud, mobile-friendly, Quality Intelligence platform.



Transform Your Quality with Enact

Ready to discover more about Enact and how it can improve your quality and process challenges? Visit www.infinityqs.com/enact for videos, white papers, and next steps.